



SOLARA

CUSTOM DOORS & LIGHTING

142 HOWELL STREET, DALLAS, TX 75207

ELECTRONIC GAS LANTERN
MAINTENANCE INSTRUCTIONS

Do not store or use gasoline, or other flammable vapors and liquids in the vicinity of this or any other appliance.

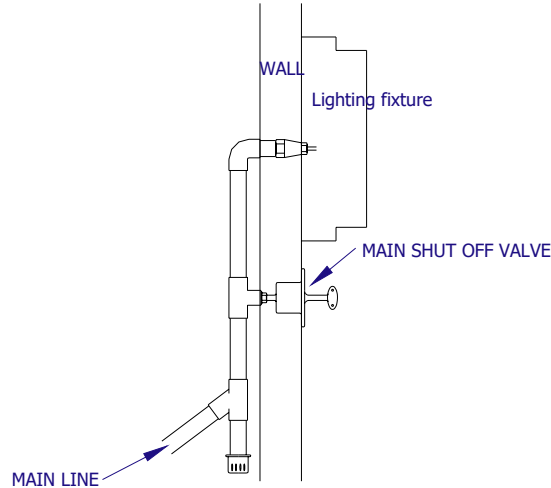
FOR YOUR SAFETY

If you smell gas:

- 1. Shut off gas to the appliance.*
- 2. Extinguish any open flame.*
- 3. If odor continues, immediately call your gas supplier.*
- 4. The gas lantern is extremely hot when in operation, use great care when servicing the lantern.*

Shut off the main power and main gas supply before attempting any maintenance procedures.

1 Turn the individual line, manual shut off valve, clock wise to the closed position to shut-off the flow of gas to the fixture. If the smell of gas is present around the fixture, turn off the manual shut off valve immediately and tighten all connections on the gas service line. Allow fixture to cool off until it is cool to the touch before attempting to service fixture. See Illustration 1 Below.



2 For Glass Cleaning, **DO NOT USE WINDEX OR ANY CLEANING SOLUTION WITH AMMONIA OR ABRASIVE CLEANERS.** Opening the lantern door, use only soap and water to clean the glass and the inside of the fixture. Rinse all soap residues away with a clean water-dampened towel. Do not attempt to clean the operating components, (burner, etc.) with soap and water. Clean the outside of the lantern and glass with the same soap and water, rinsing again with a dampened towel.

Required Maintenance. Cleaning the igniter/sensor and burner assembly. To prevent excessive soot build-up, glass breakage and deformity of flame, clean the igniter/sensor and the burner every three to four months as follows:

1

Shut off flame and let fixture cool until it is cool to the touch. Run the single-edge razor blade provided with your maintenance kit through the slot at the tip of the burner. Then use the brush provided to brush away debris or soot that may have gathered in the slot. See Photos.



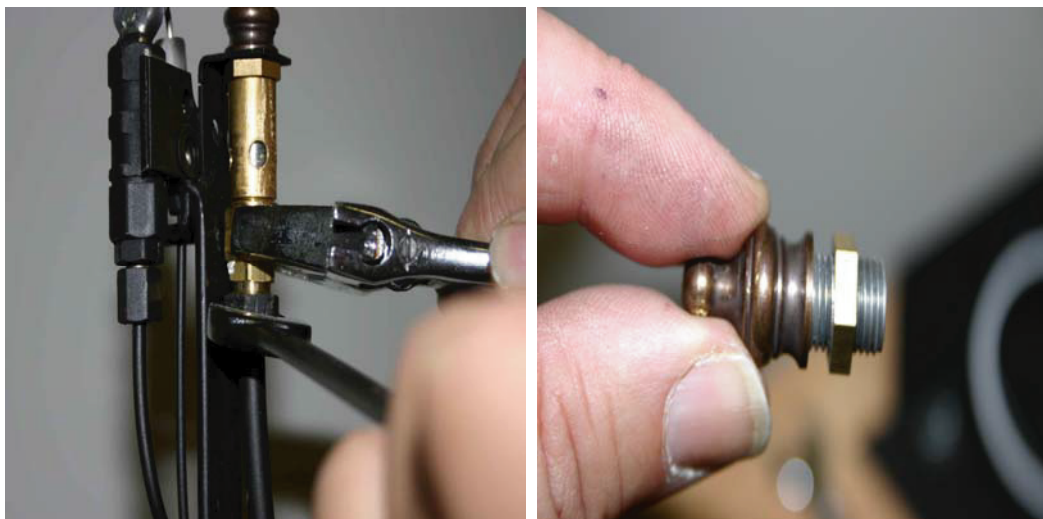
2

If the normal maintenance does not restore your flame to the proper height, please follow the next steps to clean the orifices inside the burners.

To clean the orifices inside the burners follow these steps. Recommended every six months.

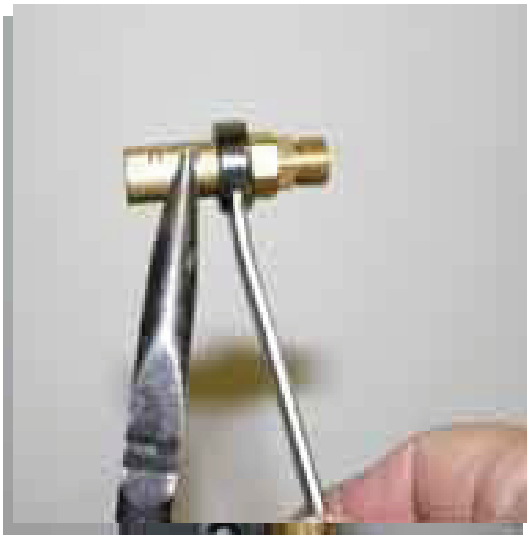
1

Remove the gas line from the bottom of the burner. Clean out the inside of the burner tube. After the unit is cooled down, remove the burner tip by using a pair of pliers as shown.



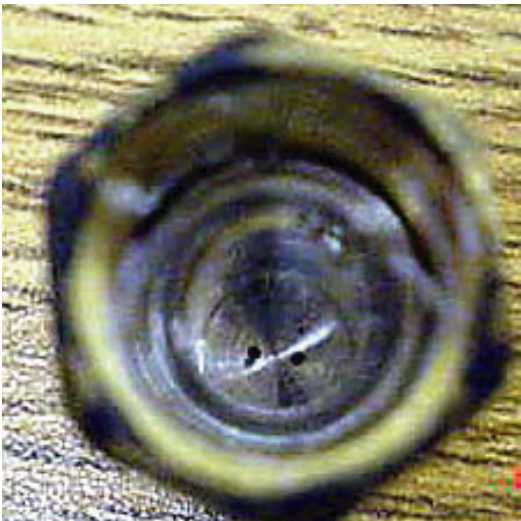
2

Remove the burner body from the bracket.



3

Use a small wire or a straight pin to clean out the tiny gas jets inside the burner orifice. Blow the soot out of the inside of the burner orifice. Reassemble the unit using pipe thread to avoid gas leaks.



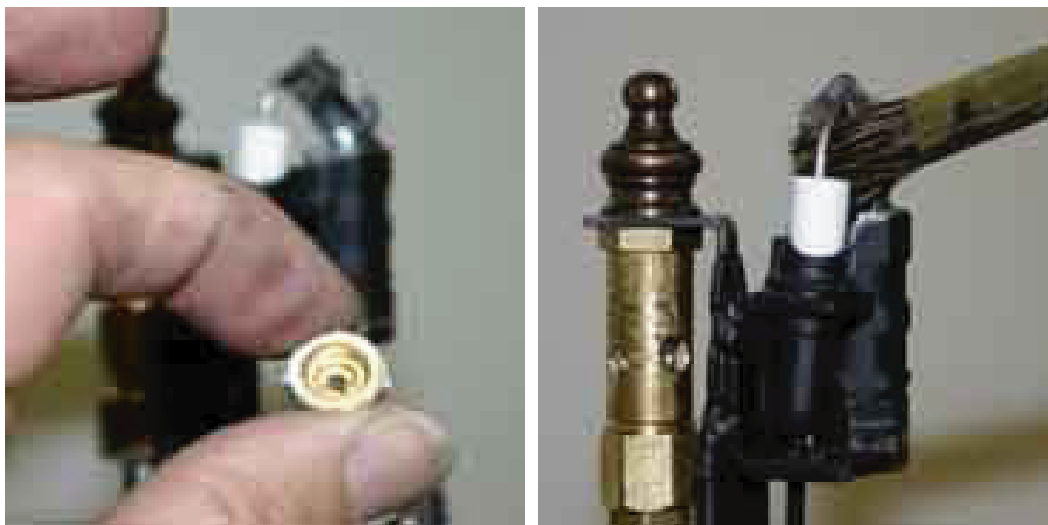
4

To clean out the pilot burner unit. Disconnect the incoming gas line.



4

Remove the burner orifice unit as shown above, clean out the inside, and use a small piece of wire to ream out the gas jets in the burner orifices. Use a stiff wire brush to clean off the igniter/sensor tip and the pilot burner.



6

Reverse the procedure to reassemble the pilot burner using pipe thread to avoid gas leakage. Tighten all connections securely.



7

Follow all safety procedures to relight your fixture.

Please contact us with any questions or concerns that you may have.

Technical support line: 214-882-9074
Main Office: 1.888.8.SOLARA ext.109

Customer Service: 214-237-0284
Local Number: 214-744-9900 ext.109

Contact us at:

Solara Lighting 142 Howell St. Dallas, Texas 75207